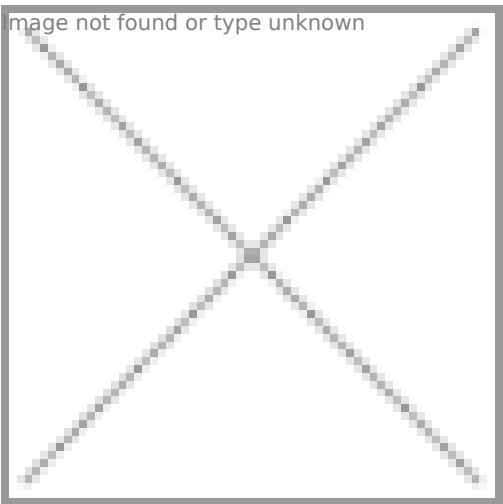
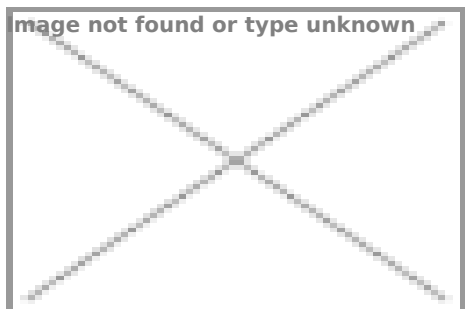


# Straight nozzle Rubber



# Handle

...less adjustable. The handle protected  
...has a plastic interior and metal exterior.  
...the metal parts can be stainless steel or  
...0 l/min, on 16 bar about 150 l/min.

**Weight:** about. 0,5 kg

**Operating pressure:** 16 bar

**Heat resistance:** +80°C

| Design          | Connection size    | Article number | Remark                                  |
|-----------------|--------------------|----------------|---|
| stainless steel | 1/2" female thread | 350086         | available in blue and red colour        |
| brass           | 1/2" female thread | 350150         | available in blue, red and white colour |