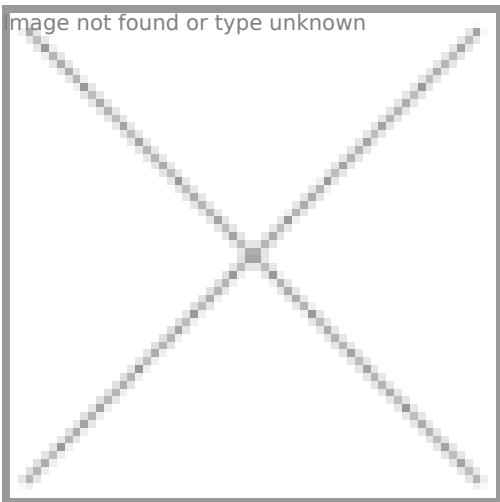
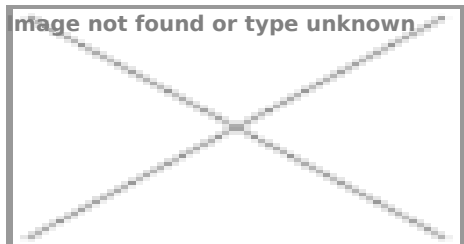


SPIRAFLEX CLEARWAY helix reinforcement



fabric insertion and steel

...purity suction, discharge hose was
...armaceutical and cosmetics industry.
...oods (up to 96% concentration) and
...hich requires high purity.

The hose is according to EC 1935/2004 and 2023/2006/EC (GMP) requirements. The manufacturing is according to the EC 1907/2006 (REACH) regulations, which means that during the manufacturing no animal derivatives, adipates or phthalates were used.

It can be sterilized with steam on +135 °C with 3, 5 bar for max 90 minutes.

It can be sterilized with hot air on +200°C for max 30 minutes.

The multiple sterilizations in an hour can be damaging for the hose. It's vulcanized with platinum catalyst according to the US Pharmacopeia in Class VI, non-cytotoxic ISO 10993-Part5.

It's according to FDA, D.M. 21/03/73 and E.P.3.1.9. (European Pharmacopeia).

We take care of the professional mounting of the hose.

Felirat: PLATINUM - USP Class IV - FDA - ISO10993 - EP3.1.9 - gyártási adatok

Heat resistance: -60°C /+200°C

Structure: transparent and smooth silicone, polyester fabric reinforcement, and AISI 302 stainless steel helix

Interior: transparent silicone, food- and pharmaceutical industry quality, taste and odor free, mirror smooth

Exterior: transparent silicone, food - and pharmaceutical industry quality, taste and odor free, smooth, easy to clean

Roll size: 20 m

Vacuum: -0,9 bar

Application: suitable for pressure and vacuum, compensates vibration and level difference

Certain diameters are available from stock. Meantime, we hold the right of selling the stock in products.

Inside Ø (mm)	Wall thickness (mm)	Outside Ø (mm)	Bending radius (mm)	Operating pressure on 20°C (bar)	Bursting pressure on 20°C (bar)	Article number
10	5	20	30	12	36	189070

Inside Ø (mm)	Wall thickness (mm)	Outside (mm)	Pressure (bar)	Bursting pressure on 20°C (bar)	Article number
13	5	23		33	189081
16	5	26		30	189061
19	5	29		30	189082
25	5	35		27	189083
25	6,5	38		27	189047
32	5	42		24	189084
38	5	48		21	189085
50	5	60	150	6	189086
65	5	75	180	5	189087
75	6	87	240	4	189088
100	6	112	360	2,5	189089

