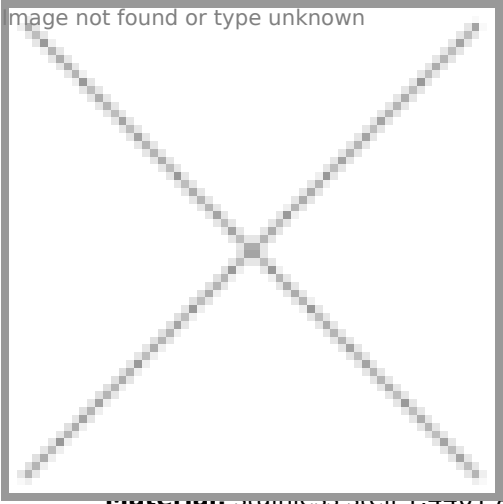
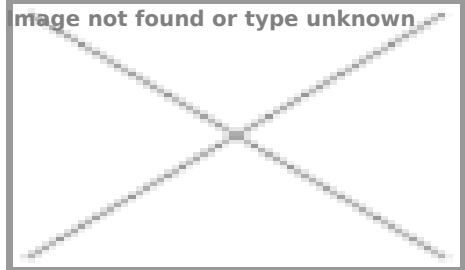


Female Stainless Steel for two-piece clamp



with collared hose shank

mium clamps.

Material stainless steel 1.4401 AISI 316

Design: two-piece clamp assembly

Standard: DIN 2828 / EN ISO 14420-7

The product is a permanent storage lots. Meantime, we hold the right of selling the stock in products.

Nominal size	Hose inside Ø x wall thickness	Article number
20	19 x 6	151339
25	25 x 6	151340
32	32 x 6	151324
40	38 x 6,5	151329
50	50 x 8	151330
65	63 x 8	151341
75	75 x 8	151338